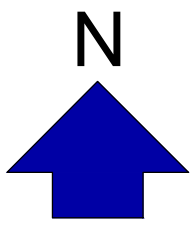


- GENERAL NOTES
1. COPYRIGHT RESERVED.
 2. DO NOT SCALE DRAWING. USE FIGURED DIMENSIONS ONLY.
 3. ALL DISCREPANCIES TO BE REPORTED TO ARCHITECT.
 4. THE CONTRACTOR IS RESPONSIBLE FOR CHECKING ALL LEVELS AND DIMENSIONS.
 5. ALL STRUCTURE TO BE TO STRUCTURAL ENGINEERS DETAILS.
 6. ALL MECH & ELEC SERVICES TO SERVICES ENGINEERS DETAILS.
 7. ALL PROPRIETARY ITEMS TO BE INSTALLED IN ACCORDANCE WITH MANUFACTURERS INSTRUCTIONS.
 8. CONTRACTOR IS RESPONSIBLE FOR THE COORDINATION OF STRUCTURE, FINISHES AND SERVICES.

REV	DATE	DESCRIPTION	BY



- 1 Bed/2P Unit
- 2 Bed/3P Unit
- 2 Bed/4P Unit
- 3 Bed/5P Unit

R 118 - BYPASS



**JOHN FLEMING
ARCHITECTS**

THE TREE HOUSE, 17 RICHVIEW OFFICE PARK
CLONSKEAGH, D14 XR82, IRELAND
T: (01) 6689888 E: info@jfa.ie W: www.jfa.ie

CLIENT
RED ROCK GLENAGEARY LTD

PROJECT
DEVELOPMENT AT GLENAGEARY AVENUE
SALLYNOGGIN, CO. DUBLIN

DRAWING
FOURTH FLOOR PLAN

SCALE
SCALE 1:200 @A1

JOB NO.
2225

DRAWN BY
MT

DATE
SEPTEMBER 2023

DRAWING NUMBER
GAV-JFA-ZZ-04-DR-A-PA2004

REVISION
-

DRAWING LOCATION
w:\2022\05 - glenageary\glen00-current drawings

DRAWING STATUS
PLANNING